



Steel frames give homeowners plenty of options in design and building

Add strength to structures

EXPERTS in steel-framing systems for homes and commercial projects, 21st Century Steel Homes and Frames (BSA 1005219) is offering designs as package kit homes to lock-up stage.

Director Jay Saeedi said the package included architectural plans for council, engineered-steel framing, a Colorbond roof system, doors, windows, light-concrete CSR Hebel panels as external cladding, internal lining and fix-out material to achieve the lock-up stage.

"We have a variety of homes to suit any client's expectations and we will be adding more designs to our portfolio for owner-builders," he said.

"Our reputation is based on the quality of the frames we manufacture.

"Engineers, builders and homeowners prefer our frame system because it is stronger and suits any design specification."

Mr Saeedi said he invited prospective customers to visit the factory or to see frames being built at different sites to appreciate the product quality.

"We do not use rivet systems or any steel less than 1mm thick," he said.

The company supplies and fixes home frames to lock-up stage to suit a variety of budgets.

"Use our environmentally friendly framing and building system and enjoy the long-term benefits of having no termite attacks, no fire risks and no on-going maintenance costs due to timber settlement and termite inspections," said Mr Saeedi.

21st Century Steel Homes and Frames recently supplied its Sunrise design for

construction at East Quay Drive, Harbour Quays (pictured).

The 275sqm project features four bedrooms, three living areas and a skillion roof.

The kit price supplied to lock-up stage was \$99,000 plus GST.

Mr Saeedi said as a licensed building company 21st Century Steel Homes understood the problems and issues builders would go through if their framing was not correctly manufactured, supplied or erected.

"The company has spent 20 years in the business of building steel-frame projects and 15 years focusing mainly on supply and fixing steel-framing components in our factory for other builders," he said.

"We are proud to offer our services and products to everyone from home owner-builders to major projects and large building companies and developers."

The company's products are used in houses, multi-unit projects, schools and storage complexes.

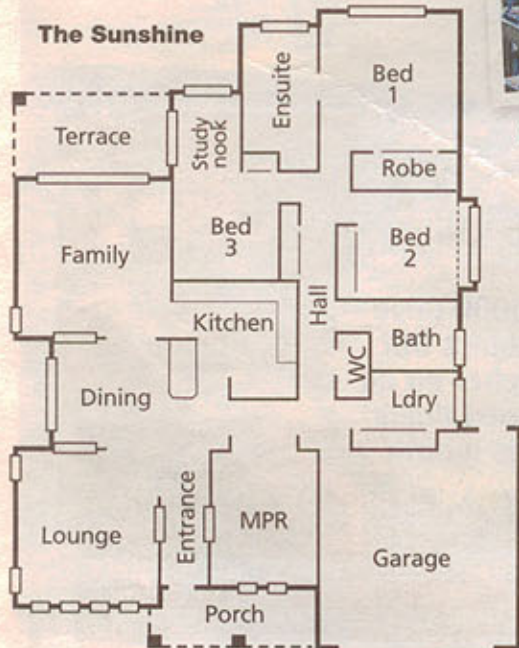
Mr Saeedi said the business took time to look after owner-builders, who were becoming a significant part of its customer base.

"Proper steel-frame work allows all other sub-contractors to do their job efficiently," he said.

For more details visit the company's factory at 24 Mercantile Court, Molendinar, go to www.steelhomes.com.au or call 5547 7496.



Steel-frame designs come in kit form



design

The Sunshine

builder

21st Century Steel Homes and Frames

features

Four bedrooms, 275sqm layout, ensuite, modern kitchen and high ceilings

price

Kit supplied to lock-up stage \$99,000 plus GST